

# Milly's Reversible Tie Hat Pattern

© Milly Ralsky for Brimming with Love  
Free for non-commercial use only

## Supplies:

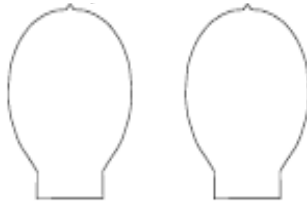
- Sewing Machine, fabric scissors, pins, iron
- 1 1/3 yards cotton woven fabric of your choice = 1 hat from same fabric
- 1 1/3 yards **each** of two contrasting fabrics makes 2 reversible hats
- Thread to match selected fabric
- Printed and assembled PDF Pattern (free from [www.brimmingwithlove.org](http://www.brimmingwithlove.org))



Note: Seam allowances in this pattern are 1/4".

## Instructions for Sewing:

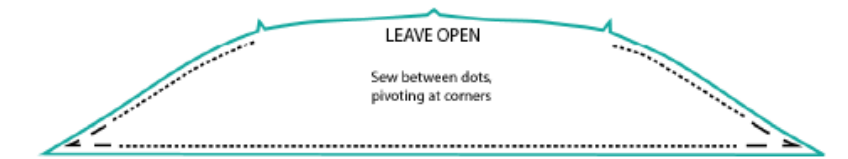
- 1) Cut 2 "round" pieces: (if want reversible hat – cut one piece out of each fabric)



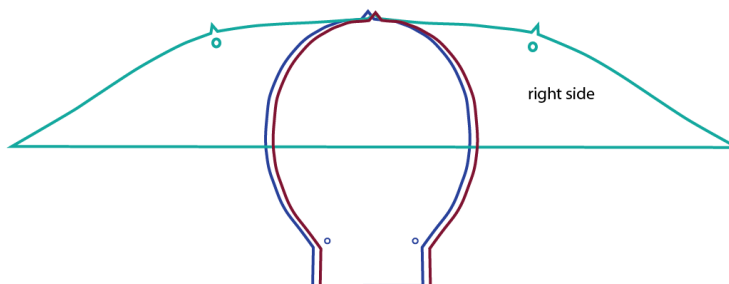
- 2) Cut 2 "pointed" pieces on the fold: (if want reversible hat – cut one piece out of each fabric)



- 3) Lay 2 oblong pieces right sides together
- 4) Sew all the way from one point to the other, leaving an opening at the top. Clip excess fabric at corner points to avoid bulk.



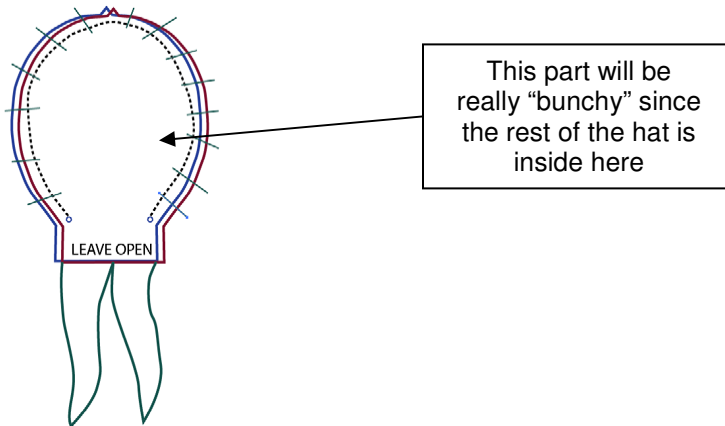
- 5) Turn right side out (use turning tool to get crisp corners if necessary) & press.
- 6) Sandwich the long piece between your two round pieces with right sides together. Line up the top center points and pin down from the top down to where the dots meet. This is one of the trickiest steps, and one of the most important. Use plenty of pins and leave the bottom section open so you can turn the hat inside out later.



(Note: If you are making a reversible hat, make sure that like fabrics are facing each other in your sandwich)

- 7) You'll end up with something that looks really "bunchy". Be careful to have all four layers carefully pinned so you won't accidentally miss one layer as you sew through them.

Optional: Instead of sewing all layers together at once, you can sew one round piece at a time to each side of the long piece.



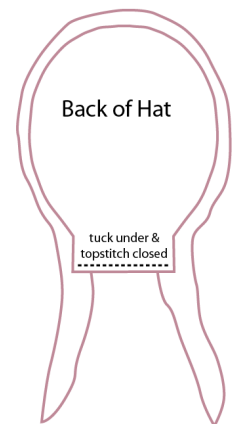
- 8) Sew through all four layers of fabric from point to point around the circle.
- 9) Now sew each side of your bottom "flap" together paying careful attention not to catch the hat tails in your seam allowance.



- 10) Pull on the tails and flip your hat right side out. We're almost done!
- 11) Fold the raw edges of the bottom flap under and top stitch near the edge to close the opening.

(Note: This small flap at bottom of the hat helps cover the scalp. Feel free to adjust the length of this flap in the pattern according to what works best for you.)

- 12) Press your hat one last time, fold back the brim, put it on and tie in the back. Congratulations! You're all done!





center top

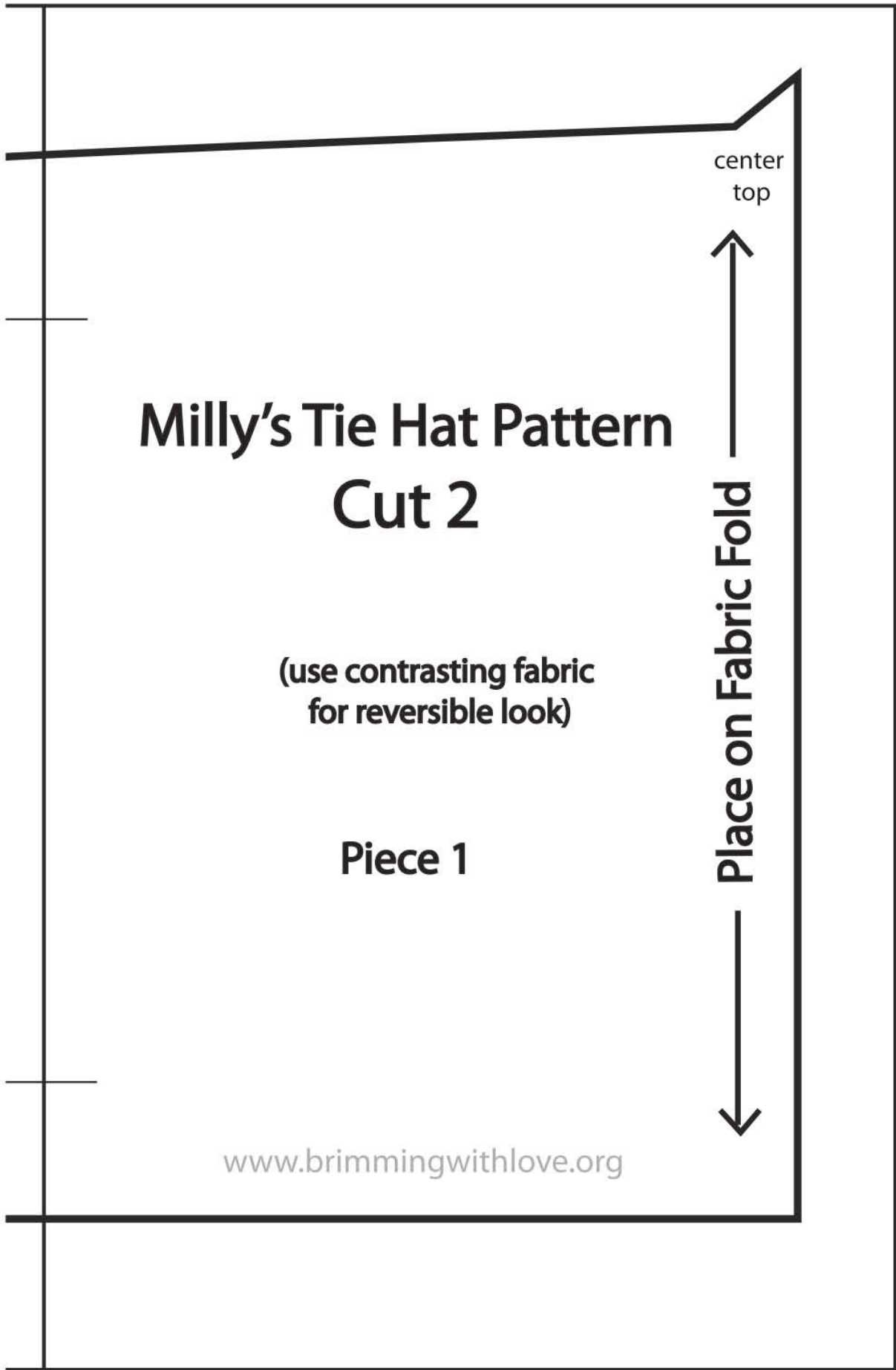
# Milly's Tie Hat Pattern Cut 2

(use contrasting fabric for reversible look)

[www.brimmingwithlove.org](http://www.brimmingwithlove.org)

Leave open before turning





# Milly's Tie Hat Pattern Cut 2

(use contrasting fabric  
for reversible look)

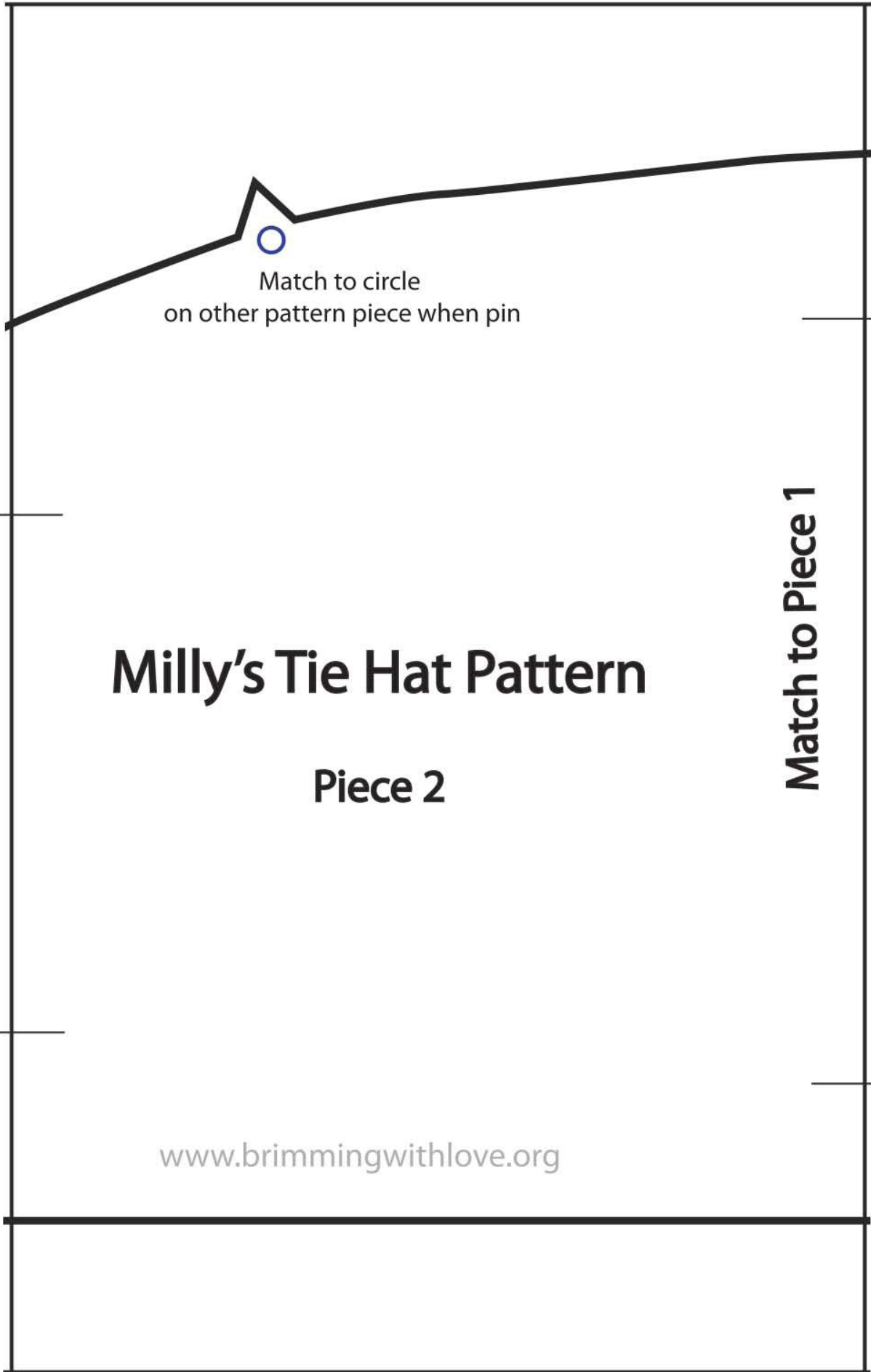
Piece 1

center  
top



Place on Fabric Fold





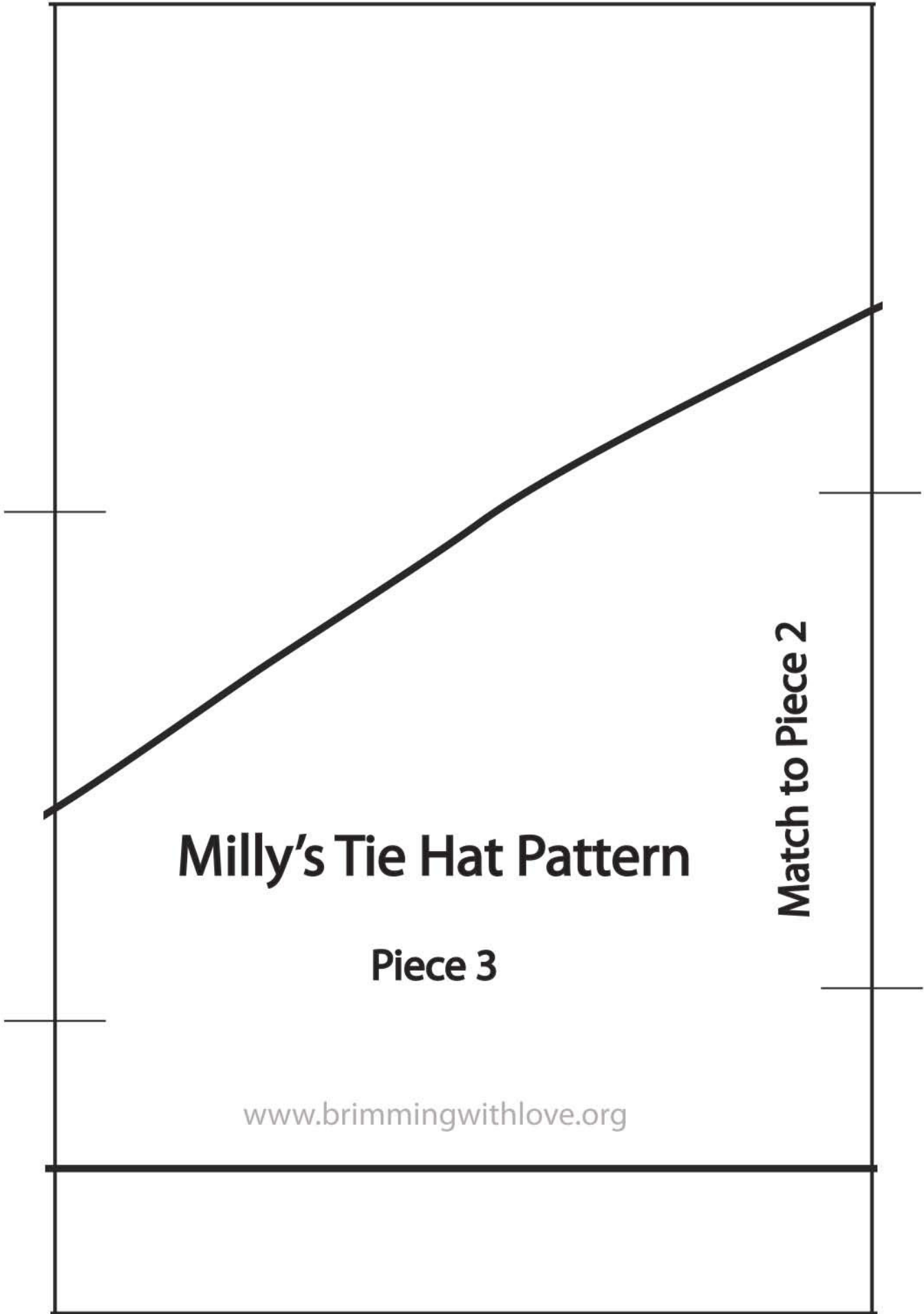
Match to circle  
on other pattern piece when pin

# Milly's Tie Hat Pattern

Piece 2

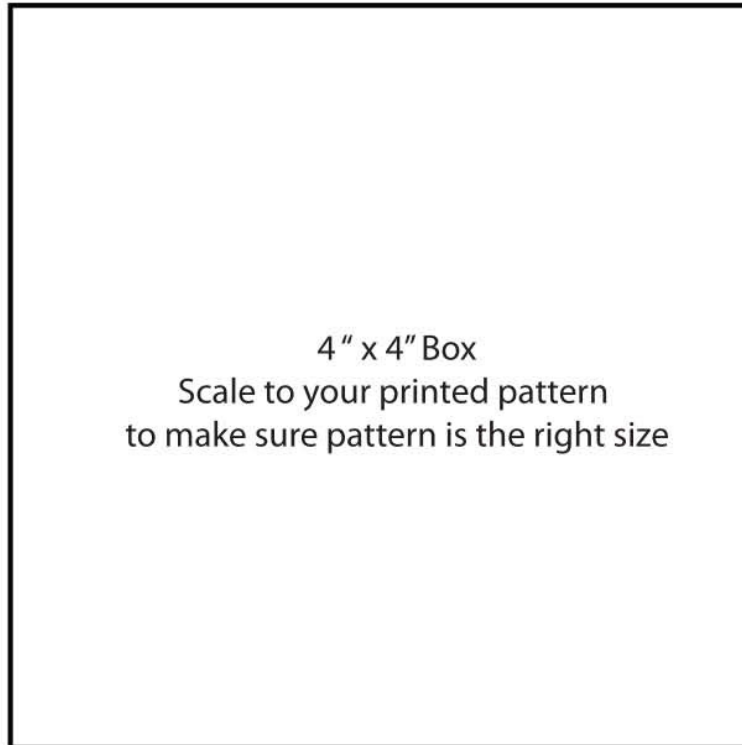
Match to Piece 1

[www.brimmingwithlove.org](http://www.brimmingwithlove.org)



# Milly's Tie Hat Pattern

[www.brimmingwithlove.org](http://www.brimmingwithlove.org)



**Match to Piece 3**

